

REVISIONS

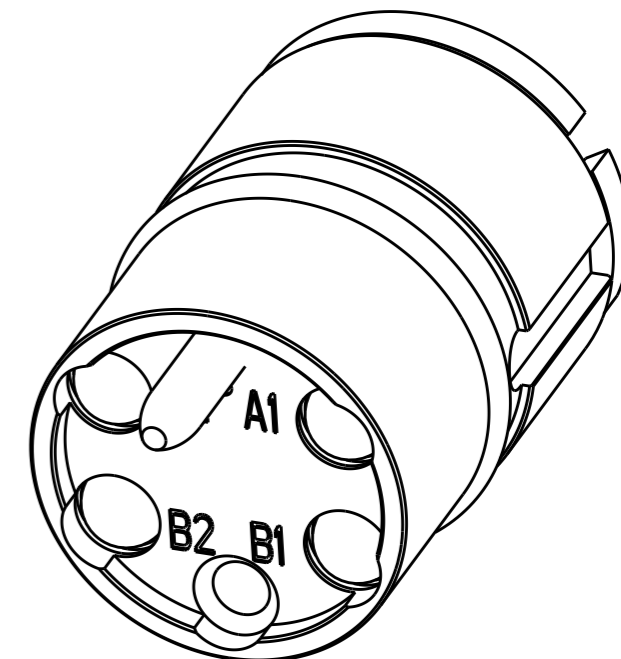
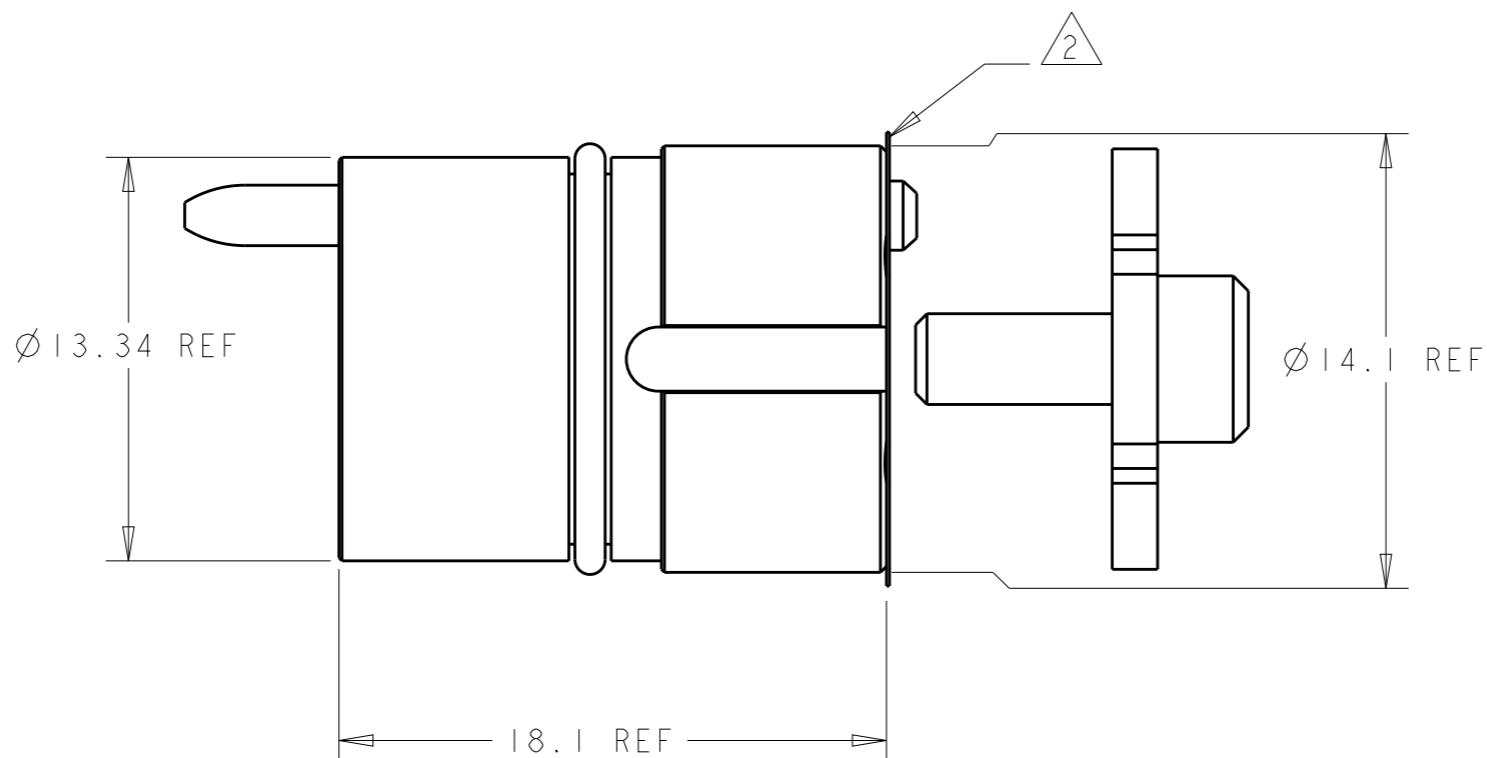
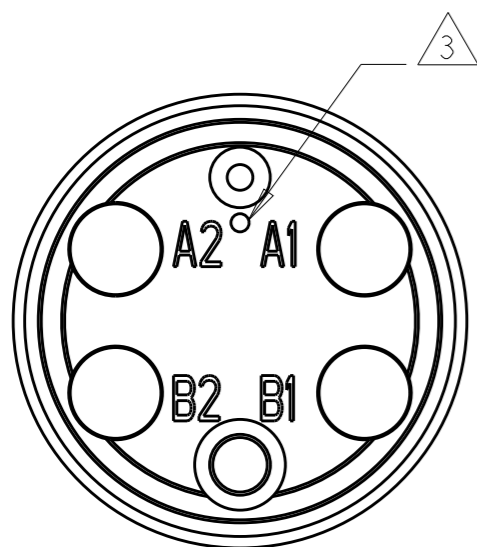
P	LTR	DESCRIPTION	DATE	DWN	APVD
E		ECR-09-007414	02JUN2009	KG	DW
F		ECR-17-001574	11APR2017	KG	DW

1. USE WITH FERRULE ASSEMBLY KIT P/N 1588908-2 (125um), OR 1588908-1 (126um). QUANTITY OF 4 REQUIRED. FERRULE MUST BE PC-POLISHED DURING FIBER TERMINATION FOR BEST PERFORMANCE.

2. PROTECTIVE LABEL APPLIED AFTER FINAL CLEAN ROOM TEST TO PREVENT OPTICAL CAVITY CONTAMINATION. REMOVE ONLY WHEN READY TO ASSEMBLE.

3. SINGLEMODE IDENTIFIER

4. FOR USE AT BOTH 1310 AND 1550nm WAVELENGTHS.



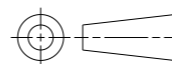
SCALE 4:1

1515740-1

PART NO.

THIS DRAWING IS A CONTROLLED DOCUMENT.

DIMENSIONS:
mm



TOLERANCES UNLESS OTHERWISE SPECIFIED:	
0 PLC	±-
1 PLC	±-
2 PLC	±-
3 PLC	±-
4 PLC	±-
ANGLES	±-

MATERIAL
STAINLESS ALLOYS & NBR

FINISH
N/A

DWN	08OCT2002
E. HOPKINS	
CHK	08OCT2002
D. WERTMAN	
APVD	08OCT2002
D. WERTMAN	

PRODUCT SPEC	-
APPLICATION SPEC	-
WEIGHT	-

CUSTOMER DRAWING



NAME
INSERT ASSEMBLY, PRO BEAM JR.,
4x1310/1550nm SM

SIZE	CAGE CODE	DRAWING NO	RESTRICTED TO
A3	00779	1515740	-

SCALE 4:1 SHEET 1 OF 1 REV F

Mouser Electronics

Authorized Distributor

Click to View Pricing, Inventory, Delivery & Lifecycle Information:

[TE Connectivity:](#)

[1515740-1](#)