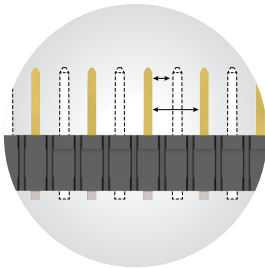


## ISOLATED POWER SYSTEMS

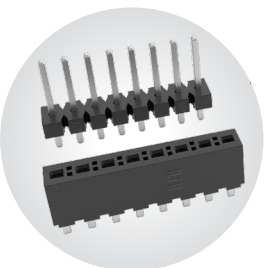
### FEATURES & BENEFITS

- Individually shrouded contacts for electrical and mechanical protection
- .100" (2.54 mm) and .165" (4.19 mm) pitch
- Surface mount or through-hole
- Vertical and right-angle for parallel, perpendicular and coplanar applications
- Locking clip, key polarization and guide post options
- Discrete wire assemblies with 16-30 AWG PVC or Teflon™ fluoropolymer wire.
- Metal or plastic rugged latching system

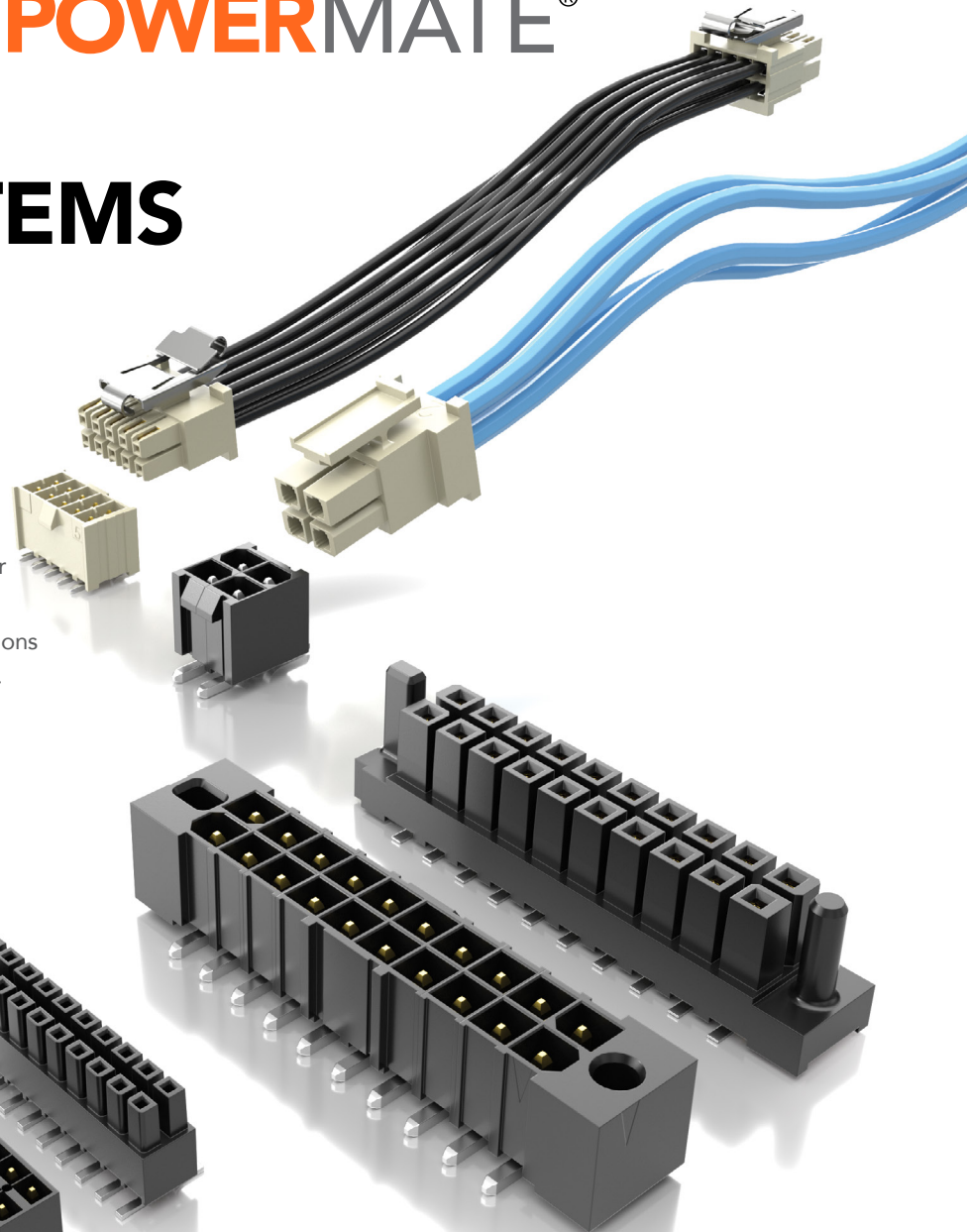
\*Teflon™ is a trademark of The Chemours Company FC, LLC used under license by Samtec



Selectively loading contacts achieves customer specific creepage and clearance requirements.



Flexible standard or high-power stacking systems with Power Eye three-finger BeCu contacts for reliable connection. For available series, visit [samtec.com/flexiblestrips](http://samtec.com/flexiblestrips)



### CREEPAGE & CLEARANCE

	CREEPAGE	CLEARANCE
IPT1/IPS1 MMSS(T)/MMSD(T)/IPL1	2.54 mm	1.91 mm
IPBT/IPBS PMSS(T)/PMSD(T)	4.27 mm	3.05 mm

Selectively loading contacts achieves customer specific creepage and clearance requirements.

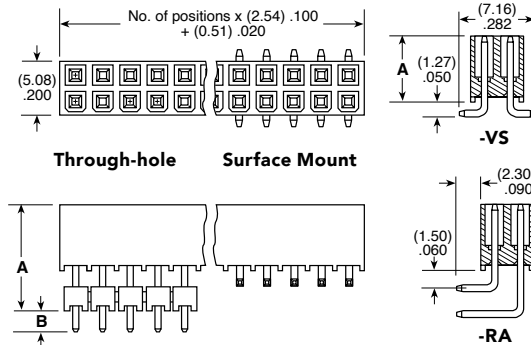
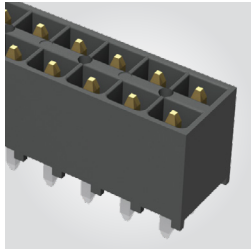
### KEY SPECIFICATIONS

SERIES	PITCH	INSULATOR MATERIAL	CONTACT MATERIAL	PLATING	OPERATING TEMP RANGE	CURRENT RATING	VOLTAGE RATING	LEAD-FREE SOLDERABLE
IPT1/IPS1	.100" (2.54 mm)	Black LCP	Phosphor Bronze	Sn or Au over 50 μ" (1.27 μm) Nickel	-55 °C to +125 °C	5.9 A (2 pins power)	700 VAC/ 990 VDC	Yes
IPBT/IPBS	.165" (4.19 mm)	Black LCP	High Copper Alloy (IPBT) Phosphor Bronze (IPBS)	Sn over 50 μ" (1.27 μm) Nickel	-55 °C to +105 °C	9.3 A (2 pins power)	400 VAC/ 566 VDC	Yes

## (2.54 mm) .100" PITCH • SHROUDED POWER CONNECTOR SET

IPT1	1	NO. PINS PER ROW	LEAD STYLE	PLATING OPTION	D	TAIL OPTION	OTHER OPTIONS
		05 10 15 20 25 (Standard Sizes)	Specify LEAD STYLE from chart	-L = 10 μ" (0.25 μm) Gold on contact, Matte Tin on tail		Requires -01 Lead Style (Leave blank for Through-hole)  -RA = Right-angle  -VS = Surface Mount	-A = Alignment Pin (-VS only) (N/A with -LC)  -LC = Locking Clip (Manual placement required) (-VS only) (N/A with -A)  -K = (6.00 mm) .236" DIA Polyimide film Pick & Place Pad (-VS only)  -TR = Tape & Reel (-VS only)  -FR = Full Reel Tape & Reel (must order max. quantity per reel; contact Samtec for quantity breaks) (-VS only)

**IPT1**  
Board Mates:  
IPS1

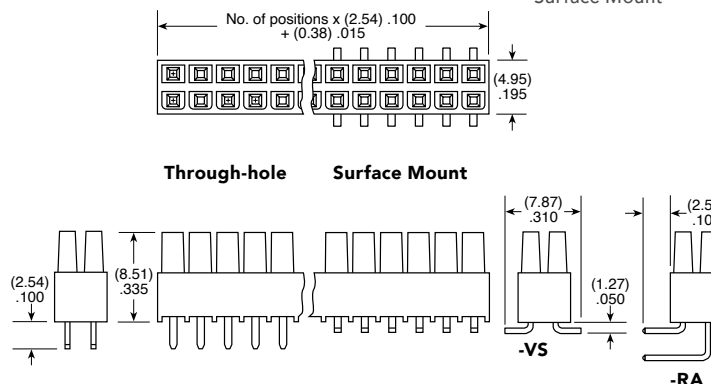
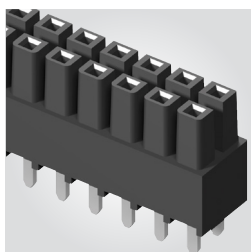


IPT1/IPS1	
PINS	CURRENT RATING (PER CONTACT)
2	5.9 A
4	4.8 A
6	4.1 A
8	3.6 A
50	2.3 A

LEAD STYLE	MATED HEIGHT	A	B
-01	(11.05) .435	(6.35) .250	(2.16) .085
-01-VS	(13.59) .535	(6.35) .250	N/A
-02	(14.00) .551	(9.30) .366	(2.64) .104
-03	(16.00) .630	(11.30) .445	(2.16) .085
-04	(17.00) .669	(12.30) .484	(2.69) .106
-05	(19.00) .748	(14.30) .563	(2.46) .097
-06	(20.00) .787	(15.30) .602	(2.35) .093
-07	(25.00) .984	(20.30) .799	(2.31) .091
-08	(30.00) 1.181	(25.30) .996	(2.39) .094
-09	(35.00) 1.378	(30.30) 1.193	(2.46) .097

IPS1	1	NO. PINS PER ROW	01	PLATING OPTION	D	TAIL OPTION	OTHER OPTIONS
		05 10 15 20 25 (Standard Sizes)		-L = 10 μ" (0.25 μm) Gold on contact, Matte Tin on tail		Leave blank for Through-hole  -RA = Right-angle  -VS = Surface Mount	-LC = Locking Clip (Manual placement required) (-VS only)  -K = (5.50 mm) .217" DIA Polyimide film Pick & Place Pad (-VS only)  -TR = Tape & Reel (-VS only)  -FR = Full Reel Tape & Reel (must order max. quantity per reel; contact Samtec for quantity breaks) (-VS only)

**IPS1**  
Board Mates:  
IPT1



**Note:**  
Some lengths, styles and options are non-standard, non-returnable.

View complete specifications at: [samtec.com?IPT1](http://samtec.com?IPT1) & [samtec.com?IPS1](http://samtec.com?IPS1)