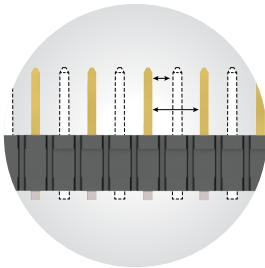


## ISOLATED POWER SYSTEMS

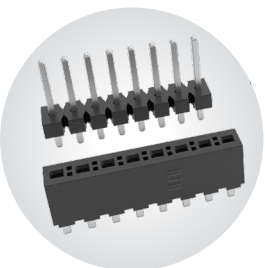
### FEATURES & BENEFITS

- Individually shrouded contacts for electrical and mechanical protection
- .100" (2.54 mm) and .165" (4.19 mm) pitch
- Surface mount or through-hole
- Vertical and right-angle for parallel, perpendicular and coplanar applications
- Locking clip, key polarization and guide post options
- Discrete wire assemblies with 16-30 AWG PVC or Teflon™ fluoropolymer wire.
- Metal or plastic rugged latching system

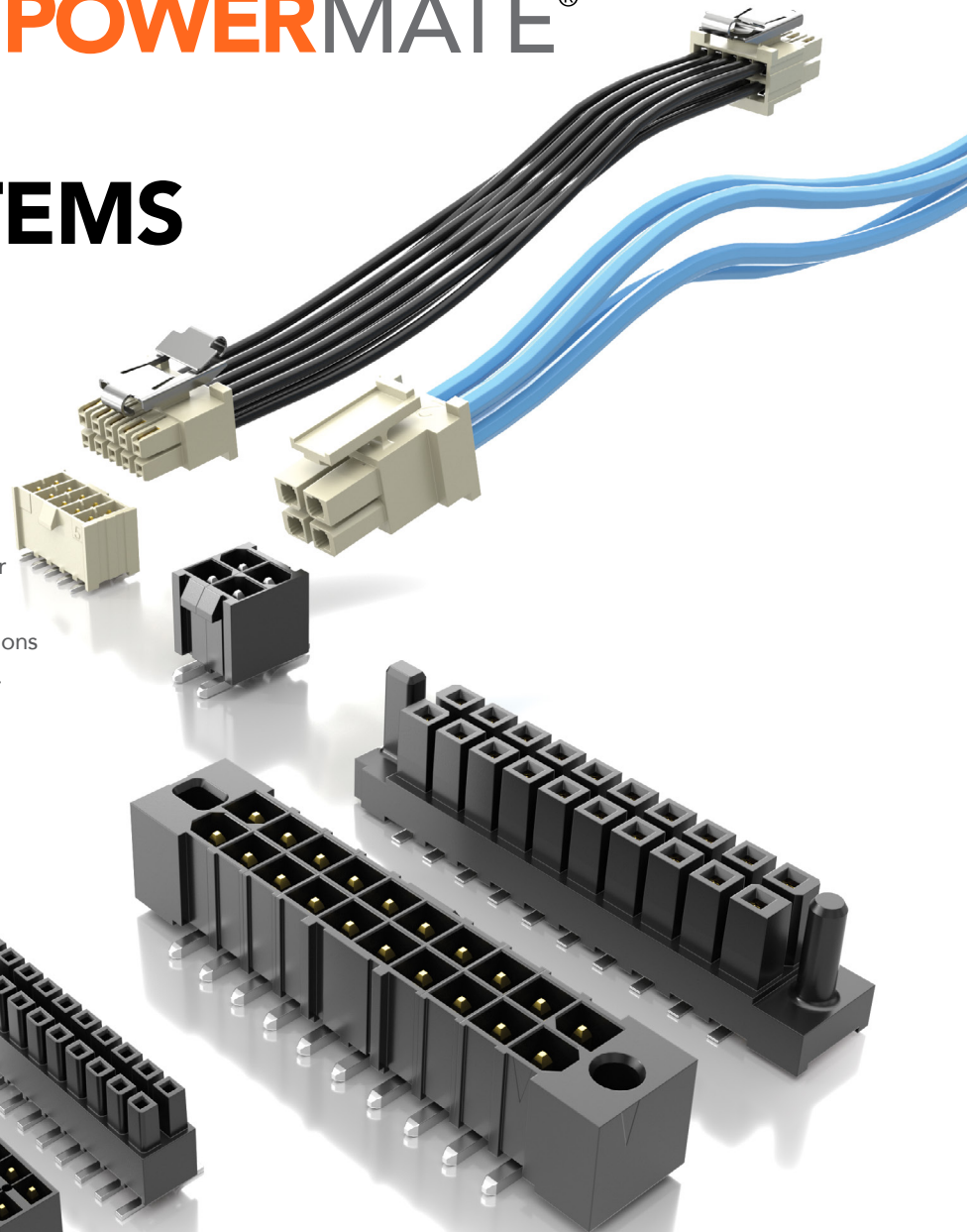
\*Teflon™ is a trademark of The Chemours Company FC, LLC used under license by Samtec



Selectively loading contacts achieves customer specific creepage and clearance requirements.



Flexible standard or high-power stacking systems with Power Eye three-finger BeCu contacts for reliable connection. For available series, visit [samtec.com/flexiblestrips](http://samtec.com/flexiblestrips)



### CREEPAGE & CLEARANCE

	CREEPAGE	CLEARANCE
IPT1/IPS1 MMSS(T)/MMSD(T)/IPL1	2.54 mm	1.91 mm
IPBT/IPBS PMSS(T)/PMSD(T)	4.27 mm	3.05 mm

Selectively loading contacts achieves customer specific creepage and clearance requirements.

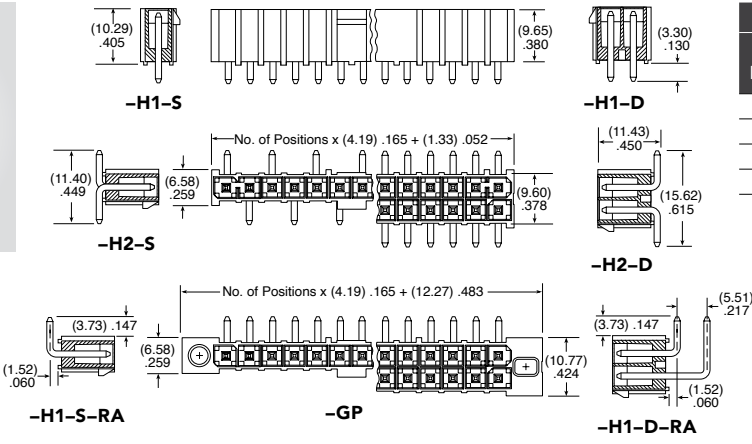
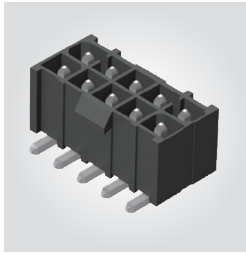
### KEY SPECIFICATIONS

SERIES	PITCH	INSULATOR MATERIAL	CONTACT MATERIAL	PLATING	OPERATING TEMP RANGE	CURRENT RATING	VOLTAGE RATING	LEAD-FREE SOLDERABLE
IPT1/IPS1	.100" (2.54 mm)	Black LCP	Phosphor Bronze	Sn or Au over 50 μ" (1.27 μm) Nickel	-55 °C to +125 °C	5.9 A (2 pins power)	700 VAC/ 990 VDC	Yes
IPBT/IPBS	.165" (4.19 mm)	Black LCP	High Copper Alloy (IPBT) Phosphor Bronze (IPBS)	Sn over 50 μ" (1.27 μm) Nickel	-55 °C to +105 °C	9.3 A (2 pins power)	400 VAC/ 566 VDC	Yes

**(4.19 mm) .165" PITCH • ISOLATED POWER CONNECTOR SET**

IPBT	1	NO. OF POSITIONS PER ROW	LEAD STYLE	PLATING OPTION	ROW OPTION	OPTIONS
		02, 03, 04, 05, 08, 10 15 (-D Only) (Standard Sizes)	-H1 = Through-hole  -H2 = Surface Mount	-T = Matte Tin	-S = Single Row  -D = Double Row	-RA = Right-angle (Lead Style -H1 only)  -GP = Guide Post Holes (Not available with -K)  -K = Keyed Polarization (Not available with -GP option, is required callout if -GP not called out)

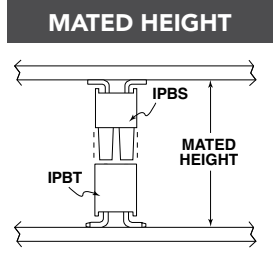
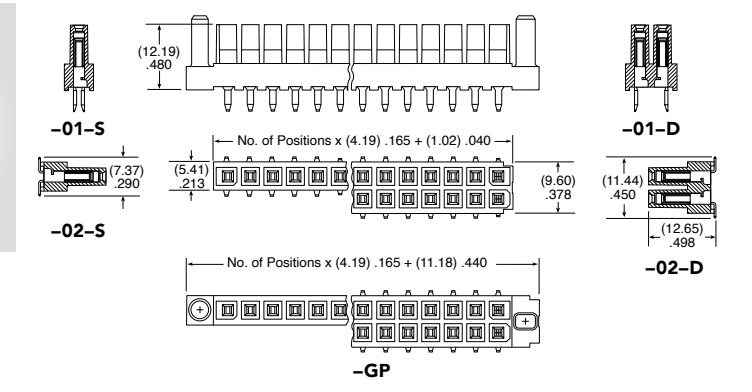
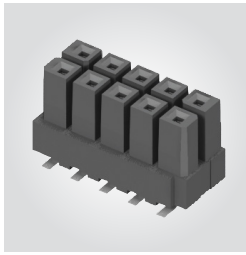
**IPBT**  
Board Mates:  
IPBS  
Cable Mates:  
PMMSD, PMSS



IPBT/IPBS	
PINS POWERED	CURRENT RATING (PER CONTACT)
2	9.3 A
4	7.4 A
6	6.4 A
8	5.9 A
30	4.4 A

IPBS	1	NO. OF POSITIONS PER ROW	LEAD STYLE	PLATING OPTION	ROW OPTION	OPTION
		02, 03, 04, 05, 08, 10 15 (-D Only) (Standard Sizes)	-01 = Standard Power  -02 = Standard Power Surface Mount	-T = Matte Tin	-S = Single Row  -D = Double Row	-GP = Guide Post

**IPBS**  
Board Mates:  
IPBT



IPBT/IPBS LEAD STYLE	MATED HEIGHT*
H1/-01	(15.25) .600
-H2/-02	(16.84) .663

**Note:**  
Some lengths, styles and options are non-standard, non-returnable.

View complete specifications at: [samtec.com?IPBT](http://samtec.com?IPBT) & [samtec.com?IPBS](http://samtec.com?IPBS)