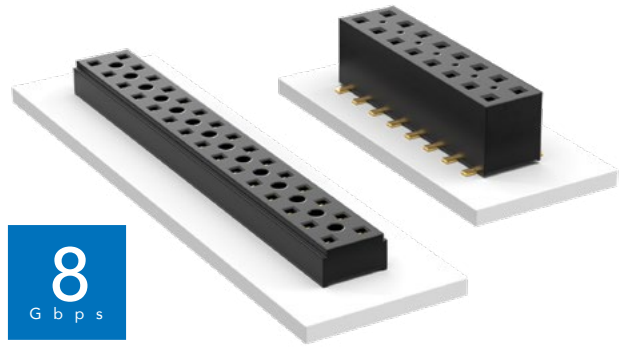


COST-EFFECTIVE & DUAL WIPE SOCKETS

(2.00 mm) .0787" PITCH • TLE/CLT SERIES



TLE

Mates:
TMMH, TMM, MTMM,
MMT, TW, LTMM, ZLTMM,
TCMD, TSH

CLT

Mates:
TMM, TMMH, MTMM,
MMT, TW, TSH

SPECIFICATIONS

TLE

Insulator Material:
Black Liquid Crystal Polymer
Contact Material:
Phosphor Bronze
Plating:
Au over 50 μ" (1.27 μm) Ni
Current Rating (TLE/TMMH):
3.2 A per pin
(2 pins powered)
Operating Temp Range:
-55 °C to +125 °C
Insertion Depth:
(2.08 mm) .082" to
(4.37 mm) .172" with
(0.38 mm) .015" wipe,
pass-through, or
(3.35 mm) .132" min
for bottom entry

CLT

Same as TLE except:
Plating:
Sn or Au over 50 μ" (1.27 μm) Ni
Current Rating (TMMH/CLT):
4.1 A per pin
(2 pins powered)
Insertion Depth:
Top Entry=
(1.40 mm) .055" minimum
Bottom Entry=
(2.57 mm) .101" minimum
(add board thickness for
correct post OAL)
Max Cycles:
100 with 10 μ" (0.25 μm) Au

PROCESSING

TLE

Lead-Free Solderable:
Yes
SMT Lead Coplanarity:
(0.10 mm) .004" max (02-26)
(0.15 mm) .006" max (27-50)*
*(.004" stencil solution
may be available; contact
ipg@samtec.com)

CLT

Same as TLE except:
SMT Lead Coplanarity:
(0.10 mm) .004" max (02-25)
(0.15 mm) .006" max (26-34)*
(0.20 mm) .008" max (35-50)*
*(.004" stencil solution
may be available; contact
ipg@samtec.com)

Note:
Some lengths, styles and
options are non-standard,
non-returnable.

TLE	- 1	NO. PINS PER ROW	- 01	PLATING OPTION	- DV	OPTIONS
-----	-----	------------------	------	----------------	------	---------



02 thru 50

-G
= 10 μ" (0.25 μm)
Gold

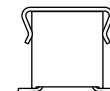
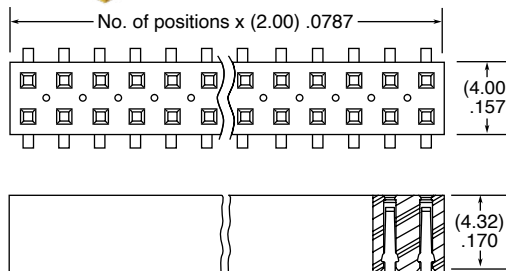
-A
= Alignment Pin
(3 positions minimum)

-K
= (5.00 mm) .197" DIA
Polyimide Film Pick & Place Pad
(3 positions minimum)

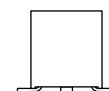
-P
= Metal Pick & Place Pad
(4 positions minimum)

-TR
= Tape & Reel Packaging
(2-37 positions only)

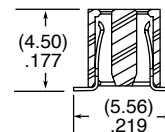
-FR
= Full Reel Tape & Reel
(must order maximum
quantity per reel; contact
Samtec for quantity breaks)
(2-37 positions only)



-P Option



-A Option



CLT	- 1	NO. PINS PER ROW	- LEAD STYLE	PLATING OPTION	- D	OTHER OPTIONS
-----	-----	------------------	--------------	----------------	-----	---------------



02 thru 50

-01
= Through-hole

-F
= Gold flash
on contact,
Matte Tin on tail

All options require
Style -02

-BE
= Bottom Entry
(Required for bottom
entry applications)

-A
= Alignment Pin
(3 positions minimum)
Metal or plastic at
Samtec's discretion

-K
= (5.00 mm) .197" DIA
Polyimide Film
Pick & Place Pad
(04 thru 50 only)

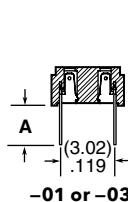
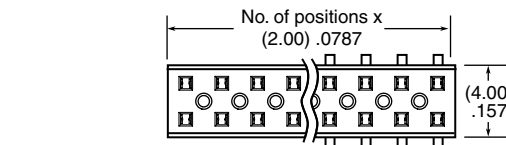
-P
= Pick & Place Pad
(4 positions minimum)
(Not always necessary
for auto placement.)

-TR
= Tape & Reel
(36 positions max)

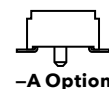
-FR
= Full Reel Tape & Reel
(must order maximum
quantity per reel;
contact Samtec for
quantity breaks)
(36 positions max)

ALSO AVAILABLE
MOQ Required

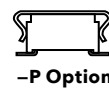
Other Platings



LEAD STYLE	A
-01	(2.16) .085
-03	(2.95) .116



-A Option



-P Option

Mouser Electronics

Authorized Distributor

Click to View Pricing, Inventory, Delivery & Lifecycle Information:

[Samtec:](#)

[TLE-110-01-G-DV-A-K](#) [TLE-114-01-G-DV-A](#) [TLE-110-01-G-DV-A-K-TR](#) [TLE-125-01-G-DV-A-K-TR](#) [TLE-120-01-G-DV-A-K-TR](#) [TLE-108-01-G-DV](#) [TLE-110-01-G-DV](#) [TLE-105-01-G-DV](#) [TLE-108-01-G-DV-P-TR](#) [TLE-117-01-G-DV-A](#) [TLE-108-01-G-DV-A-K-TR](#) [TLE-120-01-G-DV-TR](#) [TLE-105-01-G-DV-A-K-TR](#) [TLE-125-01-G-DV](#) [TLE-103-01-G-DV-A](#) [TLE-120-01-G-DV-A](#) [TLE-104-01-G-DV-A](#) [TLE-105-01-G-DV-A-P-TR](#) [TLE-104-01-G-DV-A-K-TR](#) [TLE-106-01-G-DV-A](#) [TLE-107-01-G-DV-A-K-TR](#) [TLE-104-01-G-DV-P-TR](#) [TLE-108-01-G-DV-A](#) [TLE-103-01-G-DV](#) [TLE-107-01-G-DV](#) [TLE-115-01-G-DV-A](#) [TLE-104-01-G-DV-K-TR](#) [TLE-110-01-G-DV-A-P-TR](#) [TLE-112-01-G-DV-A-K-TR](#) [TLE-106-01-G-DV-A-K-TR](#) [TLE-120-01-G-DV-K-TR](#) [TLE-106-01-G-DV-K-TR](#) [TLE-115-01-G-DV-A-K-TR](#) [TLE-110-01-G-DV-K-TR](#) [TLE-103-01-G-DV-K-TR](#) [TLE-104-01-G-DV](#) [TLE-106-01-G-DV](#) [TLE-130-01-G-DV](#) [TLE-122-01-G-DV](#) [TLE-116-01-G-DV-P-TR](#) [TLE-107-01-G-DV-A](#) [TLE-112-01-G-DV-A](#) [TLE-117-01-G-DV-P](#) [TLE-102-01-G-DV](#) [TLE-108-01-G-DV-K](#) [TLE-105-01-G-DV-K-TR](#) [TLE-110-01-G-DV-A](#) [TLE-105-01-G-DV-A](#) [TLE-125-01-G-DV-A](#) [TLE-112-01-G-DV](#) [TLE-120-01-G-DV](#) [TLE-105-01-G-DV-P-TR](#) [TLE-107-01-G-DV-K-TR](#) [TLE-115-01-G-DV](#) [TLE-110-01-G-DV-A-TR](#) [TLE-103-01-G-DV-TR](#) [TLE-113-01-G-DV-A](#) [TLE-120-01-G-DV-A-K](#) [TLE-109-01-G-DV-A-K-TR](#) [TLE-122-01-G-DV-A-K](#) [TLE-128-01-G-DV-A](#) [TLE-135-01-G-DV-A-K-TR](#) [TLE-136-01-G-DV-A](#) [TLE-136-01-G-DV-A-P](#) [TLE-105-01-G-DV-P](#) [TLE-108-01-G-DV-A-P-TR](#) [TLE-110-01-G-DV-K](#) [TLE-112-01-G-DV-P](#) [TLE-112-01-G-DV-TR](#) [TLE-118-01-G-DV-K-TR](#) [TLE-103-01-G-DV-K](#) [TLE-104-01-G-DV-A-P](#) [TLE-112-01-G-DV-K-TR](#) [TLE-115-01-G-DV-P](#) [TLE-116-01-G-DV](#) [TLE-123-01-G-DV-A](#) [TLE-127-01-G-DV-A](#) [TLE-127-01-G-DV-P](#) [TLE-143-01-G-DV-A](#) [TLE-144-01-G-DV](#) [TLE-154-01-G-DV-A](#) [TLE-155-01-G-DV-A](#) [TLE-130-01-G-DV-A](#) [TLE-104-01-G-DV-K](#) [TLE-106-01-G-DV-A-P-TR](#) [TLE-109-01-G-DV-A](#) [TLE-109-01-G-DV-TR](#) [TLE-110-01-G-DV-A-P](#) [TLE-110-01-G-DV-P-TR](#) [TLE-116-01-G-DV-A-K-TR](#) [TLE-116-01-G-DV-K](#) [TLE-119-01-G-DV-P](#) [TLE-124-01-G-DV-A](#) [TLE-126-01-G-DV](#) [TLE-129-01-G-DV-A](#) [TLE-138-01-G-DV-A](#) [TLE-140-01-G-DV-A](#) [TLE-141-01-G-DV-A](#) [TLE-153-01-G-DV-A](#) [TLE-105-01-G-DV-TR](#)