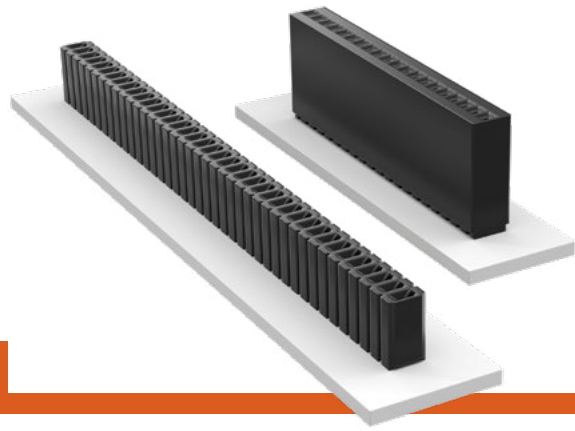


THROUGH-HOLE MICRO SOCKETS

(1.27 mm) .050" PITCH • SLM/SMS SERIES



SLM

Mates:
HTMS, TMS, MTMS, DWM,
HDWM, FTR, HMTMS

SMS

Mates:
HTMS, TMS, MTMS,
DWM, HDWM, FTR, TML,
ZML, HMTM

SPECIFICATIONS

Insulator Material:
SLM: Black Glass Filled Polyester
SMS: Black LCP

Contact Material:
Phosphor Bronze

Plating:
Au or Sn over
50 μ " (1.27 μ m) Ni

Current Rating (SLM/TMS):
5.2 A per pin
(2 pins powered)

Current Rating (SMS/TMS):
5.0 A per pin
(2 pins powered)

Operating Temp Range:
-55 °C to +125 °C with Gold
-55 °C to +105 °C with Tin

Insertion Depth:
SLM: (2.03 mm) .080"
to (3.05 mm) .120"
SMS: (3.43 mm) .135" to
(6.35 mm) .250" with
(0.38 mm) .015" wipe

PROCESSING

Lead-Free Solderable:
SLM: No, Lead Wave Only
SMS: Yes

ALSO AVAILABLE

Other Platings
(MOQ Required)

Note:
Some lengths, styles and
options are non-standard,
non-returnable.

SLM	-	1	NO. PINS PER ROW	-	01	PLATING OPTION	-	ROW OPTION
-----	---	---	------------------	---	----	----------------	---	------------

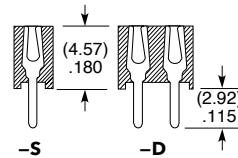
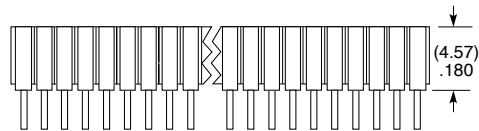
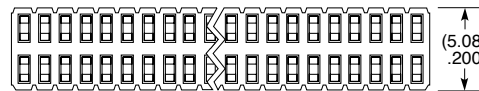
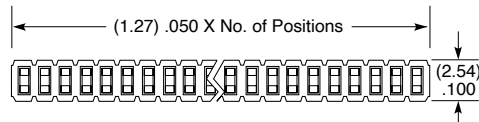
01 thru 50

-L
= 10 μ " (0.25 μ m) Gold on contact,
Matte Tin on tail

-G
= 20 μ " (0.51 μ m) Gold on contact,
Gold flash on balance

-S
= Single Row

-D
= Double Row



SMS	-	1	NO. PINS PER ROW	-	LEAD STYLE	PLATING OPTION	-	ROW OPTION
-----	---	---	------------------	---	------------	----------------	---	------------

01 thru 50

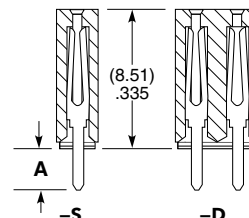
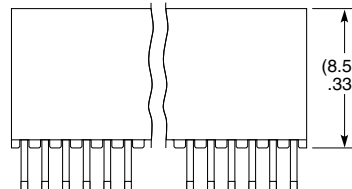
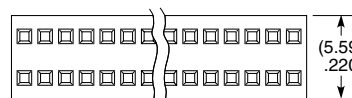
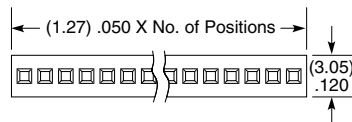
Specify
LEAD
STYLE
from
chart

-L
= 10 μ " (0.25 μ m) Gold on contact,
Matte Tin on tail

-G
= 20 μ " (0.51 μ m) Gold on contact,
Gold flash on balance

-S
= Single Row

-D
= Double Row



LEAD STYLE	A
-01	(2.54) .100
-02	(4.83) .190

Mouser Electronics

Authorized Distributor

Click to View Pricing, Inventory, Delivery & Lifecycle Information:

[Samtec:](#)

[SMS-110-01-G-D](#) [SMS-108-01-G-S](#) [SMS-120-01-G-S](#) [SMS-102-01-G-D](#) [SMS-107-01-G-S](#) [SMS-116-01-S-D](#) [SMS-104-01-G-S](#) [SMS-105-01-G-D](#) [SMS-103-01-G-D](#) [SMS-126-01-G-S](#) [SMS-120-01-G-D](#) [SMS-119-01-G-S](#) [SMS-115-01-G-D](#) [SMS-102-01-G-S](#) [SMS-107-02-G-S](#) [SMS-107-01-S-S](#) [SMS-110-02-G-S](#) [SMS-125-01-S-D](#) [SMS-128-01-G-S](#) [SMS-116-01-G-S](#) [SMS-125-01-G-S](#) [SMS-107-01-S-D](#) [SMS-108-01-S-D](#) [SMS-103-01-G-S](#) [SMS-106-01-G-D](#) [SMS-129-01-G-D](#) [SMS-112-01-S-D](#) [SMS-116-01-S-S](#) [SMS-122-01-G-S](#) [SMS-130-01-S-D](#) [SMS-104-02-G-S](#) [SMS-106-02-G-S](#) [SMS-132-01-G-S](#) [SMS-107-02-G-D](#) [SMS-114-01-S-S](#) [SMS-108-01-G-D](#) [SMS-112-01-G-S](#) [SMS-102-01-S-S](#) [SMS-105-01-G-S](#) [SMS-112-01-G-D](#) [SMS-103-01-S-S](#) [SMS-105-01-S-D](#) [SMS-112-01-S-S](#) [SMS-118-01-S-S](#) [SMS-116-01-G-D](#) [SMS-109-01-G-S](#) [SMS-101-01-G-S](#) [SMS-125-01-G-D](#) [SMS-118-01-G-D](#) [SMS-114-01-G-S](#) [SMS-113-01-G-S](#) [SMS-114-01-S-D](#) [SMS-110-02-G-D](#) [SMS-125-01-S-S](#) [SMS-113-01-S-D](#) [SMS-113-01-G-D](#) [SMS-103-02-G-D](#) [SMS-144-01-G-S](#) [SMS-134-01-S-D](#) [SMS-106-01-G-S](#) [SMS-127-01-G-S](#) [SMS-130-01-G-D](#) [SMS-105-01-S-S](#) [SMS-106-01-S-S](#) [SMS-109-01-G-D](#) [SMS-110-01-S-D](#) [SMS-120-01-S-D](#) [SMS-123-01-G-D](#) [SMS-108-01-S-S](#) [SMS-105-01-L-S](#) [SMS-111-01-G-S](#) [SMS-124-01-S-S](#) [SMS-117-01-G-D](#) [SMS-117-01-S-D](#) [SMS-114-01-G-D](#) [SMS-110-01-S-S](#) [SMS-117-01-G-S](#) [SMS-110-01-G-S](#) [SMS-115-01-G-S](#) [SMS-105-02-G-S](#) [SMS-108-02-G-S](#) [SMS-105-02-G-D](#) [SMS-102-02-H-S](#) [SMS-121-01-L-D](#) [SMS-105-01-F-D](#) [SMS-106-02-T-D](#) [SMS-108-02-S-S](#) [SMS-108-02-T-S](#) [SMS-109-02-G-D](#) [SMS-109-02-S-D](#) [SMS-112-02-T-S](#) [SMS-115-01-F-S](#) [SMS-115-02-S-D](#) [SMS-118-01-G-S](#) [SMS-118-02-G-S](#) [SMS-118-02-S-S](#) [SMS-119-02-T-D](#) [SMS-121-01-T-D](#) [SMS-123-02-G-D](#) [SMS-125-02-T-S](#)